

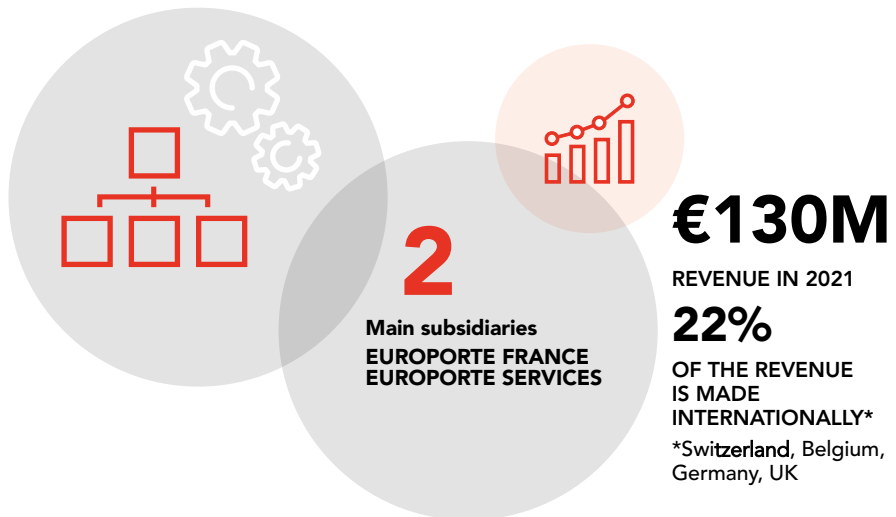


EUROPORTE COMMITTED ON ALL TRACKS





Key figures





8.4M

Net tonnes of goods
transported in 2021

2.0Bn

TONNES-KILOMETRES



+180

TRAINS

Per week hauled
on average by
Europorte France
en 2021



6%

(ESTIMATED)
MARKET SHARE OF THE FRENCH
RAIL FREIGHT SECTOR



800KM

OF TRACK MANAGED
AND MAINTAINED



40 INDUSTRIAL

SITES MANAGED BY
EUROPORTE SERVICES

ROLLING STOCK

72

LOCOMOTIVES

+10,000

WAGONS

Handled by Europorte France



EUROPORTE

Europorte, Getlink's rail freight subsidiary, has two subsidiaries: Europorte France and Europorte Services.

Europorte is more than a Railfreight operator and is present across the entire rail freight transport logistical chain, from collecting and haulage on primary and secondary national networks (Europorte France), loading and unloading of wagons on private branch lines on industrial sites to managing rail infrastructure (ports, private and public/private industrial sites) in France and also in Belgium (Europorte Services).

Europorte is jointly operating its various complementary activities in order to offer its customers a wide range of rail freight services as well as complete and tailor-made solutions, meeting their expectations for integrated and high-quality logistics chains.



**EUROPORTE
FRANCE**

P.04



**EUROPORTE
SERVICES**

P.10

MESSAGE FROM THE CHAIRMAN



.....

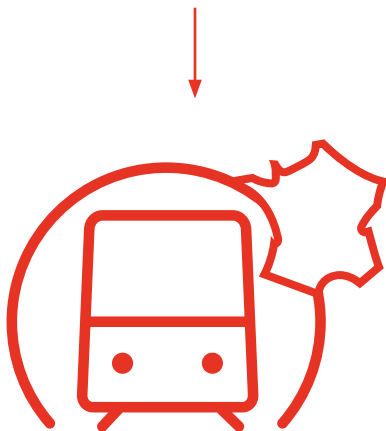
Europaorte did not become the leading private rail freight company by chance. It has got here through the commitment of the women and men involved every day in serving its customers and developing future-oriented and eco-responsible rail freight.

.....



RAPHAËL DOUTREBENTE
CHAIRMAN OF EUROPORTE

EUROPORTE FRANCE



Rail freight train traction is the core business of Europorte France.

As member of the ATTI , Europorte France offers its customers a collection and delivery service on the entire national rail network as well as in Switzerland, Belgium or Germany whatever the type of goods (food, chemistry, automobile...), packaging (bulk, liquid, solid, container, pallet...), distance to travel (national or international) or the tonnage (whole train or isolated wagons).

• •
An average of
+180
trains hauled
per week
• •



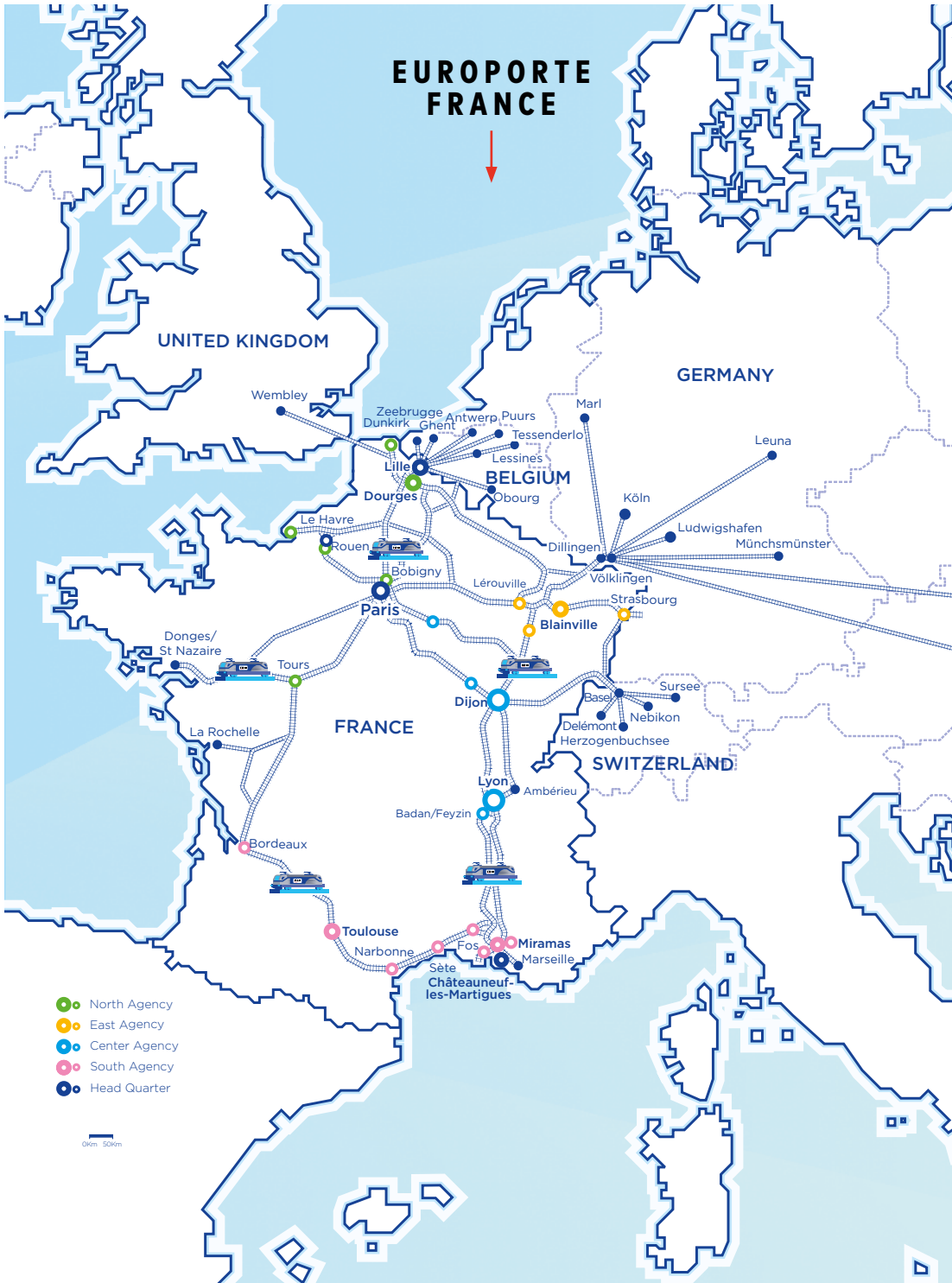
Europorte France, a 24/7 service



Europorte France offers a complete service of rail traction of mainline freight trains, relying on 4 commercial assets: **quality of service, safety, punctuality and digitalization.** The company also offers its customers connections with neighbouring European countries, in partnership or open access as in Belgium or Germany where it has its own traffic authorizations (license and certificate), or through its rail service FLEX EXPRESS. Europorte France conducts its commercial activities from 4 regional departments covering the entire French territory, in order to provide an efficient local service and a personalized operational response.

The global
offer proposed
by Europorte
allows me to focus
on my core business.







Europorte France's rail transport services include:

- > administration and technical control of wagons from departure to arrival at destination;
- > traffic and monitoring of trains on the networks;
- > provision of rolling stock and associated maintenance;
- > administration and management of technical interfaces in conjunction with infrastructure managers;
- > transport of all type of goods including hazardous one between major ports and the main European economic centers;
- > Spot train and insulated wagons service.

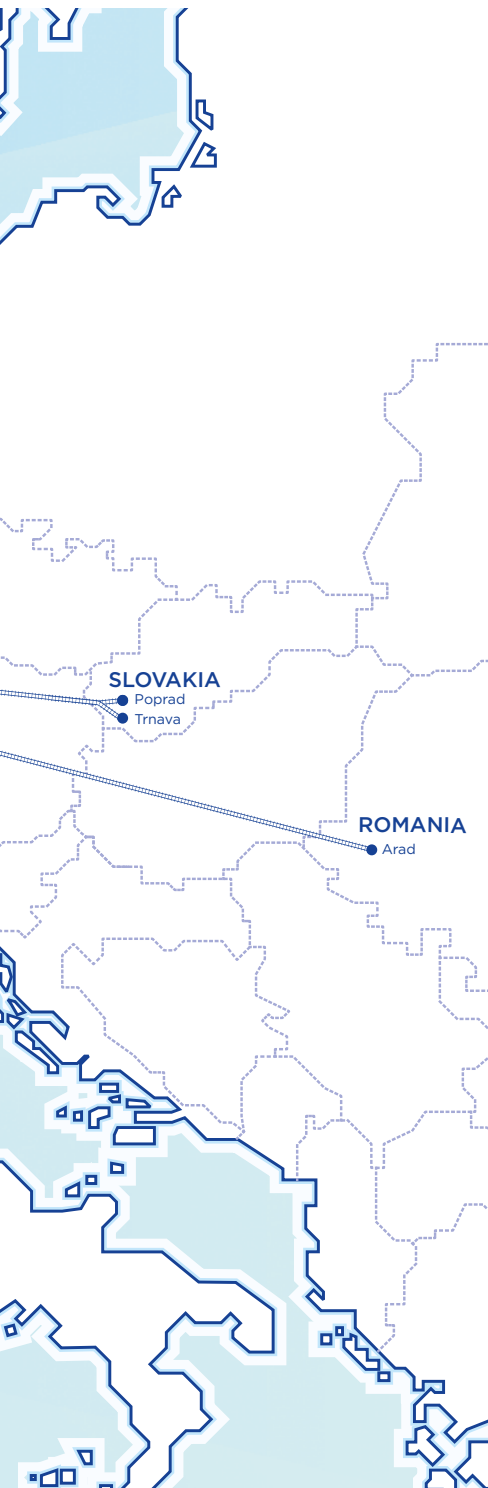


A real relationship
based on trust
has been established
with Europorte France
for more than 10 years.

EUROPORTE

Europorte France is setting up its operation on:

- > optimising transport plans based on regular paths;
- > organising rail business through regional hubs;
- > guarantee of service through the supply of reliable human and material resources dedicated to traffic;
- > regular and punctual delivery of goods;
- > safety on customers' private branch lines and on the national railway network;
- > communications on the status of customers' goods traffic.





EUROPORTE LAUNCHES FLEX EXPRESS



Launched in 2021, Flex Express is a high-frequency rail shuttle that connects the main industrial and petrochemical areas in France, Germany and the Benelux. Built on the Europorte rail corridor in France and internationally, FLEX EXPRESS offers an open and flexible solution covering single wagons and full trains, spot trains, campaign trains and regular services.

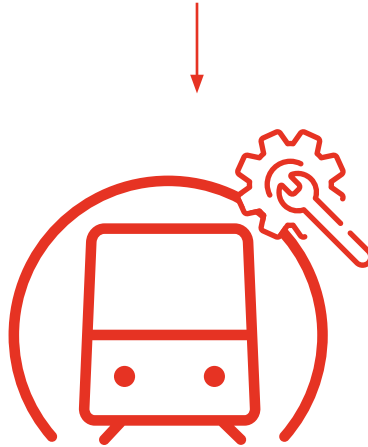
This capacity offer allows existing customers as well as new ones to access additional transport facilities from within Europorte, whether for conventional transport or for hazardous materials. This service is handled by a dedicated operational manager who monitors the various routes in real time.



A double digit growth since its launch

This new services relies on a European network of major rail experts made up of logisticians, freight forwarders and rail companies. It is part of the ambition to promote modal shift and double the share of rail freight by 2030.

EUROPORTE SERVICES



Europorte Services, is a major private player in rail operations and internal logistics in more than 40 industrial sites in France and 7 port infrastructures. Europorte Services relies on 3 core values: safety, excellence and transparency.

• •
800KM

of track managed
and maintained
by Europorte Services
• •

Railway and logistics services on industrial sites



With nearly 50 years of experience, Europorte Services is the leading private specialist in rail handling and logistics at industrial sites and SEVESO in France, particularly in the oil, chemical, steel, automotive and ports. Its activities correspond to a range of services to industry mainly in the field of shipments and receipts of basic, semi-finished or finished products, all certified MASE and ISO 9001.

Exploitation

- > Handling of wagons
- > Port terminal services
- > Loading and unloading wagons, trucks and ships
- > Administrative management
- > Dispatching



With Europorte we share the same culture aiming to zero incidents.



Railway maintenance

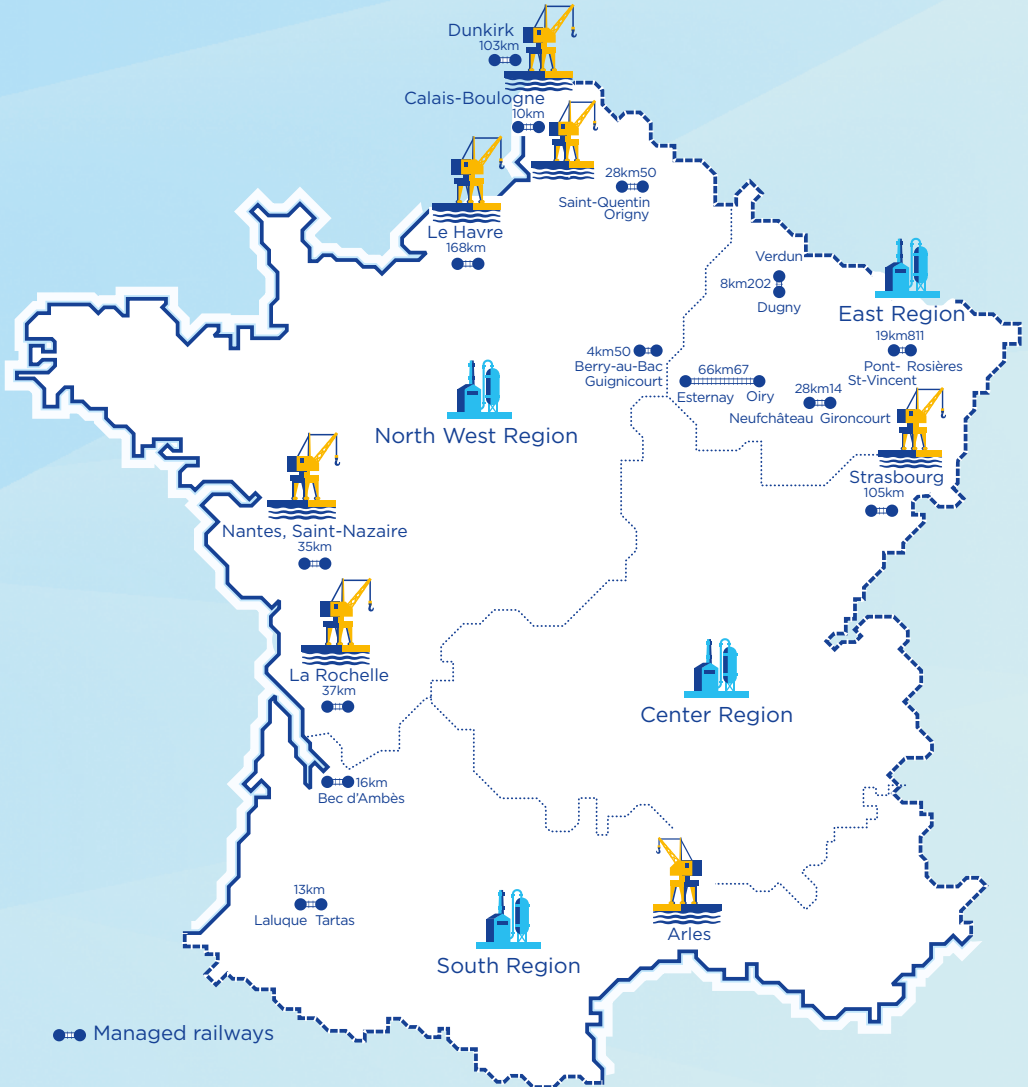
- > Preventive, systematic and conditional maintenance of switches, catenaries, level crossings, engineering structures and electrical and mechanical signaling equipment
- > Reception of works
- > Stocks of security documents
- > 3,000 references of safety parts
- > CMMS, providing relevant performance indicators
- > Consulting mission

Rolling Stock

Europorte Services offers a wide range of services:

- > maintenance, troubleshooting and repair of locomotives on site or in workshop;
- > renovation of locotractors;
- > rental/sale of engines and parts;
- > on-site technical visits, maintenance, troubleshooting and repair of cars;
- > lifting of locomotives, rail cars and wagons.

EUROPORTE SERVICES





Railway Infrastructure Manager

A true extension of its traditional business and know-how, Europorte Service has developed an offer of delegated management of rail infrastructure. Europorte Services concentrates a majority of its activities on 7 of the largest French maritime and fluvial ports - Dunkirk, Nantes-Saint-Nazaire, Le Havre, La Rochelle, Strasbourg, Bordeaux, Calais-Boulogne and Arles. Based on 4 main principles: **security, quality, availability, cost control and reporting.**

Europorte Services has developed a range of services including:

- > operations and railway traffic management;
- > maintenance of railway networks;
- > railway engineering: audit, consulting, expertise.

Thanks to high-performance and wellmaintained equipment, Europorte Services offers a reactive service offer, in compliance with the regulatory framework.

Exploitation

- > Railway safety provided in compliance with the regulations in force and support of reference documents related to the operation;
- > **Customized management tools developed by our teams:**
 - optimized planning of traffic on a network and interface with RFN (National Rail Network),
 - real-time personalized monitoring thanks to an innovative web application,
 - reporting tailored to your needs;
- > **Expert teams:**
 - monitoring and skills management,
 - responsiveness/flexibility,
 - writing of CSR (Operating Safety Rules) and local instructions.

Maintenance

- > Preventive, systematic and conditional maintenance of switches, catenaries, level crossings, engineering structures and electrical and mechanical signaling equipment;
- > Reception of works;
- > Stocks of safety parts;
- > CMMS, providing relevant performance indicators.

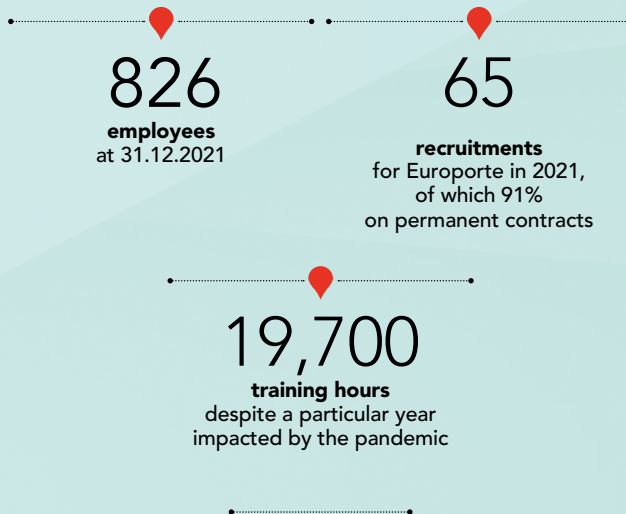
Audit/Consulting/Expertise

Infrastructure audit: balance sheet, contradictory audit, state of the heritage

- > **Innovative measurement tools:**
 - wagon for measuring the geometry of the track under load,
 - S3M, System for Measurement Capture and Maintenance Control;
- > SMS Writing, Security Management System;
- > Experts at your service to streamline maintenance thanks to great adaptability in the respect of safety (track, catenary, signaling...).



EUROPORTE IS COMMITTED TO CSR



Sustainable commitments

Europorte strengthens its initiatives every year to limit the impact of its activities on the environment and commits itself daily through:

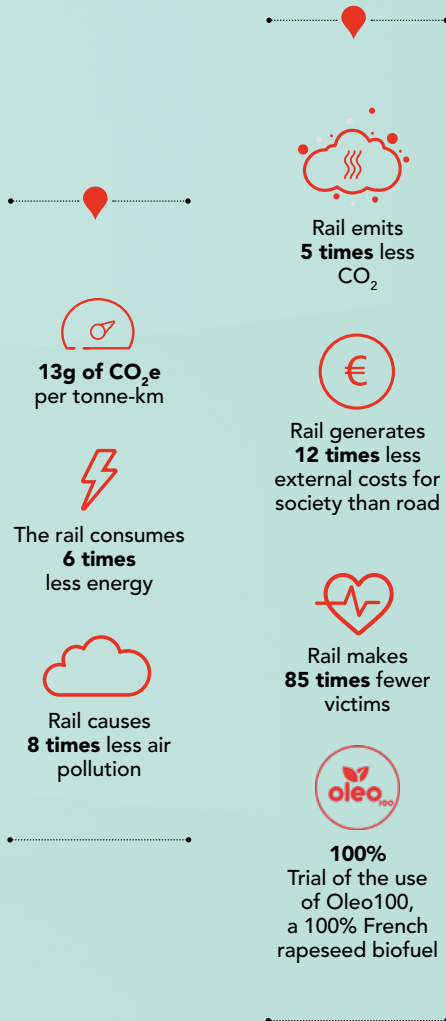
- > transparent reporting of environmental samples and discharges;
- > optimising energy consumption through the identification of the impacts;
- > implementation of waste sorting/collection schemes and recycling according to the various activities;
- > raising employees awareness on eco-friendly behaviour;
- > establishment of a comparative environmental assessment for the customers in order to compare the different logistic solutions.

Safety

Maintaining a high level of safety and security is one of Europorte's key priorities, exercising rigour on a daily basis in its management of safety and in its implementation of railway operating regulations: transport of hazardous goods according to international regulations (RID), expertise on SEVESO sites, MASE, SQAS, EcoVadis certifications, TK'Blue, EPSF, ECM, EcoPhyto, Iso 9001 labels and a SPA policy. Since 2012, Europorte has strengthened monitoring of skills and security clearances, including the introduction of an IT tool to manage clearances for all staff exercising safety functions. All safety incidents are recorded and analysed, so that recommendations can be made and action plans drawn up.

Training

Europorte dedicates a significant budget to the training of its employees, particularly train drivers (mainly Europorte France) and operational safety functions: training agents, recognizers or managers of the manoeuvre. Europorte Services is referenced as training center for catcher, manoeuvre manager and train driver and can rely on the CFFCO, the training center of Getlink.





EUROPORTE HAS TEAMED UP WITH SAIPOL TO DECARBONATE RAILWAY THANKS TO OLEO100



A French first for locomotives hauling freight trains.



We are really proud to be the first rail freight operator to run with Oleo100 because **it is fully in line with the Group's policy to fight against global warming** as well as being part of the dynamic of innovating in customer service while maintaining high quality in reliability and safety.

RAPHAËL DOUTREBENTE,
CHAIRMAN OF EUROPORTE

• **Europorte is committed to the decarbonisation of rail**

- > Europorte has teamed up with Saipol to achieve a French first for locomotives hauling freight trains - running on Oleo100, a biofuel made entirely from French rapeseed.
- > The objective of this live running experiment is to replace the fuel of thermal locomotives on the non-electrified sections with Oleo100, the first, renewable, biodegradable fuel that guarantees a co-production of local vegetable proteins for feeding breeding farms. Its use reduces greenhouse gas emissions by 60% over the entire life cycle of the fuel and would allow Europorte to substitute 1.1 million litres of fuel by 2025, i.e. the equivalent of 2,500 tonnes of GHG emissions (Scope 1).



The partnership between Europorte and Stadler is an important step in the Avril group's commitment to act for the climate by reducing the carbon footprint of our transport. It is also, by shifting our own flows to renewable energies, the opportunity **to demonstrate the feasibility and to engage other players in the energy transition.**

CHRISTOPHE BEAUNOIR,
CHIEF EXECUTIVE OFFICER OF SAIPOL

—•—
-60%
greenhouse gas
emissions

—•—
-2,500
tonnes of GHG
emissions
—•—



EUROPORTE
www.europorte.com

EUROPORTE

Tour Lilleurope
11 Parvis de Rotterdam
CS 30 004
59777 Lille
France