

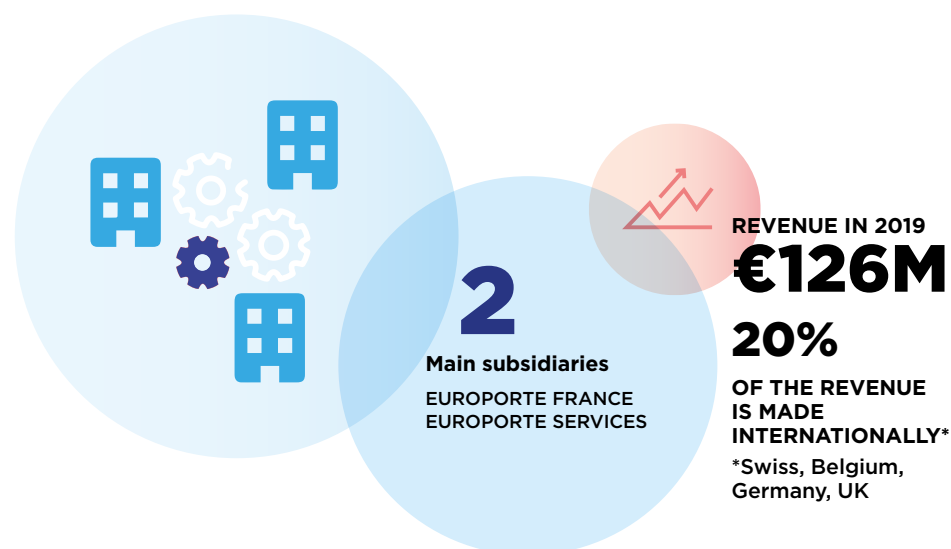
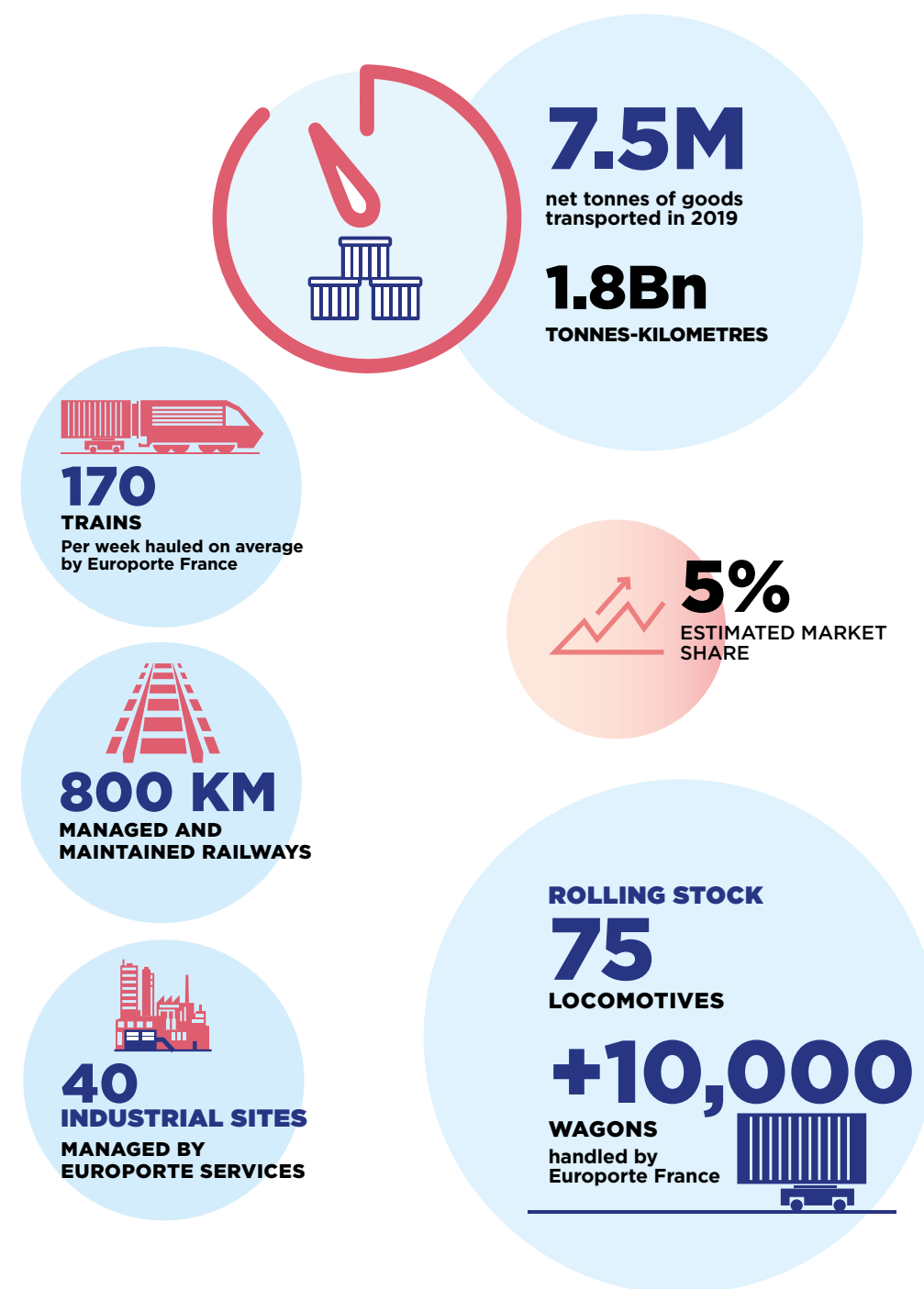


# EUROPORTE

## THE ARCHITECT OF RAILWAYS SOLUTIONS



# Key figures



# EUROPORTE

## THE ARCHITECT OF RAILWAYS SOLUTIONS

**Europorte, Getlink's rail freight subsidiary, has two subsidiaries: Europorte France and Europorte Services.**

Europorte is present across the entire rail freight transport logistical chain, from collecting and haulage on primary and secondary national networks (Europorte France), loading and unloading of wagons on private branch lines on industrial sites to managing rail infrastructure (ports, private and public/private industrial sites) in France and also in Belgium (Europorte Services).

Europorte is jointly operating its various complementary activities in order to offer its customers a wide range of rail freight services as well as complete and tailor-made solutions, meeting their expectations for integrated and high-quality logistics chains.



### MESSAGE FROM THE CHAIRMAN

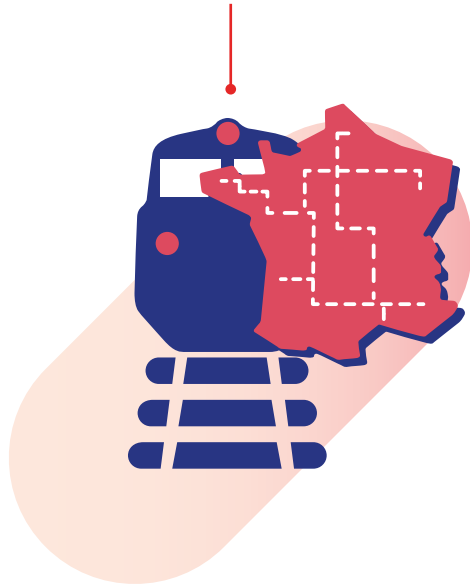
“

Europorte acts on a daily basis to implement a unique culture and an innovative global offer based on four fundamental values: security, quality of service, punctuality and digitalization

”

**PASCAL SAINSON** CHAIRMAN OF EUROPORTE

# EUROPORTE FRANCE



Rail freight train traction is the core business of Europorte France. As member of the ATTI, Europorte France offers its customers a collection and delivery service on the entire national rail network as well as in Switzerland, Belgium or Germany whatever the type of goods (food, chemistry, automobile...), packaging (bulk, liquid, solid, container, pallet...), distance to travel (national or international) or the tonnage (whole train or isolated wagons).

An average of  
**170**  
trains hauled  
per week



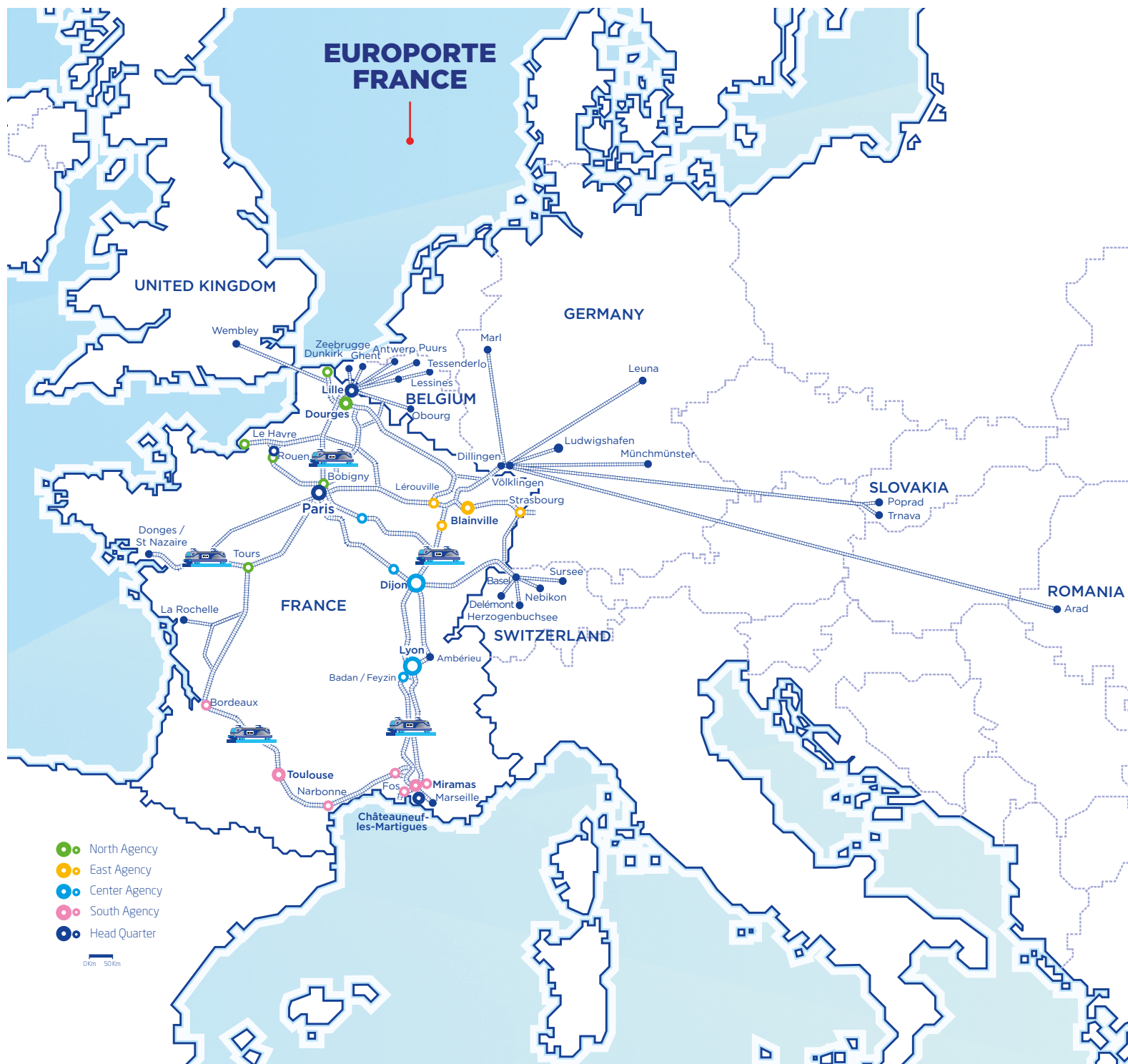
## Europorte France, a 24/7 service

Europorte France offers a complete service of rail traction of mainline freight trains, relying on 4 commercial assets: **quality of service, safety, punctuality and digitalization**. The company also offers its customers connections with neighbouring European countries, in partnership or open access as in Belgium or Germany where it has its own traffic authorizations (license and certificate). Europorte France conducts its commercial activities from 4 regional departments covering the entire French territory, in order to provide an efficient local service and a personalized operational response.

“  
The global offer  
proposed by Europorte  
allows me to focus  
on my core business.”







#### Europorte France's rail transport services include:

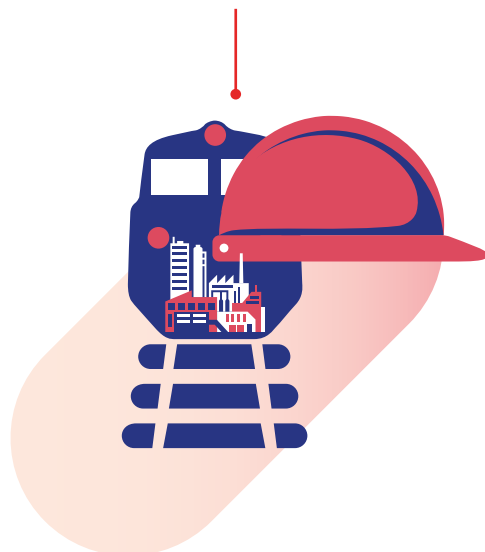
- administration and technical control of wagons from departure to arrival at destination;
- on site train movement and control on rail network;
- provision of rolling stock and associated maintenance;
- administration and management of technical interfaces in conjunction with infrastructure managers;
- transport of all types of freight including dangerous goods and intermodal transport of maritime containers between major ports and the main European economic centres;
- spot transport for one-off requirements.

“  
A real relationship  
based on trust  
has been established  
with Europorte France  
for more than 10 years.”

#### Europorte France is setting up its operation according to 6 main parameters appropriate to serving industrial customers:

- optimising transport plans based on regular paths;
- organising rail business through regional hubs (Le Havre, Dunkirk, Lérrouville, Dijon, Lyon, Marseille...);
- guarantee of service through the supply of reliable human and material resources dedicated to traffic;
- regular and punctual delivery of goods;
- safety on customers' private branch lines and on the national railway network;
- communications on the status of customers' goods traffic.

# EUROPORTE SERVICES



Europorte Services, is a major private player in rail operations and internal logistics in more than 40 industrial sites in France and 6 port infrastructures. Europorte Services relies on 3 core values: safety, excellence and transparency.

800 KM  
managed and  
maintained railways  
by Europorte Services

## Railway and logistics services on industrial sites

With nearly 50 years of experience, Europorte Services is the leading private specialist in rail handling and logistics at industrial sites and SEVESO in France, particularly in the oil, chemical, steel, automotive and ports. Its activities correspond to a range of services to industry mainly in the field of shipments and receipts of basic, semi-finished or finished products, all certified MASE and ISO 9001.

### Exploitation

- Handling of wagons
- Terminal services on RFN (National Railway Network)
- Loading and unloading wagons, trucks and ships
- Administrative management
- Dispatching

“  
With Europorte  
we share the same  
culture aiming  
to zero incidents.



### Railways maintenance

- Preventive, systematic and conditional maintenance of switches, catenaries, level crossings, engineering structures and electrical and mechanical signaling equipment
- Reception of works
- Stocks of security documents (3,000 references, of which 2,000 are stored)
- CMMS, providing relevant performance indicators

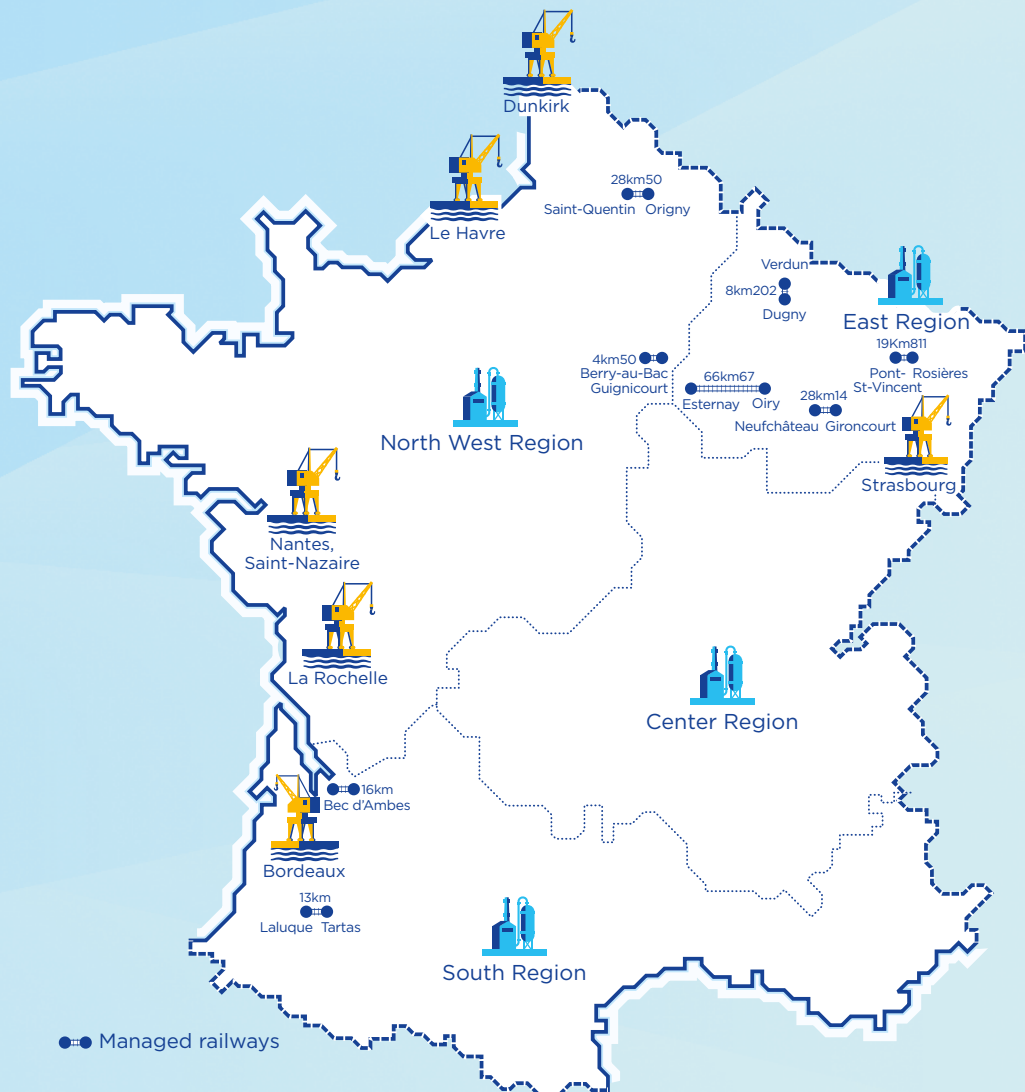
### Rolling Stock

Europorte Services offers a wide range of services:

- maintenance, troubleshooting and repair of locomotives on site or in workshop;
- renovation of locotracors;
- rental / sale of engines and parts;
- on-site technical visits, maintenance, troubleshooting and repair of cars;
- lifting of locomotives, rail cars and wagons.



## EUROPORTE SERVICES



## Railway Infrastructure Manager

A true extension of its traditional business and know-how, Europorte Service has developed an offer of delegated management of rail infrastructure. Europorte Services concentrates a majority of its activities on 6 of the largest French maritime and fluvial ports - Dunkirk, Nantes-Saint-Nazaire, Le Havre, La Rochelle, Strasbourg and Bordeaux. Based on 4 main principles: **security, quality, availability, cost control and reporting.**

Europorte Services has developed a range of services including:

- operations and railway traffic management;
- maintenance of railway networks;
- railway engineering: audit, consulting, expertise.

Thanks to high-performance and well-maintained equipment, Europorte Services offers a reactive service offer, in compliance with the regulatory framework implemented by the EPSF (Public Safety Establishment for Railways) and the STRMTG (Technical Service for lifts and guided transports).

### Exploitation

- Railway safety provided in compliance with the regulations in force and support of reference documents related to the operation
- **Customized management tools developed by our teams:**
  - optimized planning of traffic on a network and interface with RFN (National Rail Network),
  - real-time personalized monitoring thanks to an innovative web application,
  - reporting tailored to your needs;
- **Expert teams:**
  - monitoring and skills management,
  - responsiveness / flexibility,
  - writing of CSR (Operating Safety Rules) and local instructions.

### Maintenance

- Preventive, systematic and conditional maintenance of switches, catenaries, level crossings, engineering structures and electrical and mechanical signaling equipment
- Reception of works
- Stocks of security documents (3,000 references, of which 2,000 are stored)
- CMMS, providing relevant performance indicators

### Audit / Consulting / Expertise

- Infrastructure audit: balance sheet, contradictory audit, state of the heritage
- **Innovative measurement tools:**
    - wagon for measuring the geometry of the track under load,
    - S3M, System for Measurement Capture and Maintenance Control;
  - SMS Writing, Security Management System;
  - Experts at your service to streamline maintenance thanks to great adaptability in the respect of safety (track, catenary, signaling...).



## EUROPORTE IS COMMITTED TO CSR

828

employees  
at 31.12.2019

99

recruitments  
for Europorte in 2019, of which  
c.85% on permanent contracts

20,000

training hours provided to  
Europorte staff in France in 2019

### Sustainable commitments

Europorte strengthens its initiatives every year to limit the impact of its activities on the environment and commits itself daily through:

- transparent reporting of environmental samples and discharges;
- optimising energy consumptions in order to reduce the impact on the environment;
- implementation of waste sorting/collection schemes and recycling according to the various activities;
- raising employees awareness on eco-friendly behaviour;
- establishment of a comparative environmental assessment for the customers in order to compare the different logistic solutions.



Rail generates  
**12 times less**  
external costs for  
society than road

### Safety

Maintaining a high level of safety and security is one of Europorte's key priorities, exercising rigour on a daily basis in its management of safety and in its implementation of railway operating regulations: transport of dangerous goods according to international regulations (RID), expertise on SEVESO sites, MASE, SQAS, EcoVadis certifications, TK'Blue, and Carbon trust Labelisation and a SPA policy.

Safety represents a top priority for Europorte. Since 2012, Europorte has strengthened monitoring of skills and security clearances, including the introduction of an IT tool to manage clearances for all staff exercising safety functions. All safety incidents are recorded and analysed, so that recommendations can be made and action plans drawn up.

### Training

Europorte dedicates a significant budget to the training of its employees, particularly train drivers (mainly Europorte France) and operational safety functions: training agents, recognizers or managers of the manoeuvre.

Europorte Services is referenced as training center for catcher, manoeuvre manager and train drive and can rely on the CFFCO, the training center of Getlink.



The rail consumes  
**6 times less energy**



Rail causes  
**8 times less air pollution**



Rail emits  
**9 times less CO<sub>2</sub>**



Rail makes  
**85 times fewer victims**





**EUROPORTE**  
**[www.europorte.com](http://www.europorte.com)**

## **EUROPORTE**

Tour Lilleurope  
11 Parvis de Rotterdam  
CS 30 004  
59777 Lille  
France



**Commercial Management**  
**[info@europorte.com](mailto:info@europorte.com)**  
**Tel.: +33 (0)3 28 36 53 70**



**Infrastructure Management**  
**[socorailGID@europorte.com](mailto:socorailGID@europorte.com)**  
**Tel.: +33 (0)3 28 51 42 48**